

# The University of Rhode Island Planning Process Overview

Office of Planning Services & Professional Development  
Updated 2006



## STRATEGIC PLANNING ELEMENTS

### VISION

Describes aspirations for the future.  
Broad and inspirational in tone  
Long term strategic intent  
Defines what the organization is capable of becoming.

### MISSION

Supportive of vision.  
Conveys a sense of purpose

Environmental Scanning  
Current and Future Trend Analysis

### VALUES

Represents core ideology about the way an organization conducts its work.

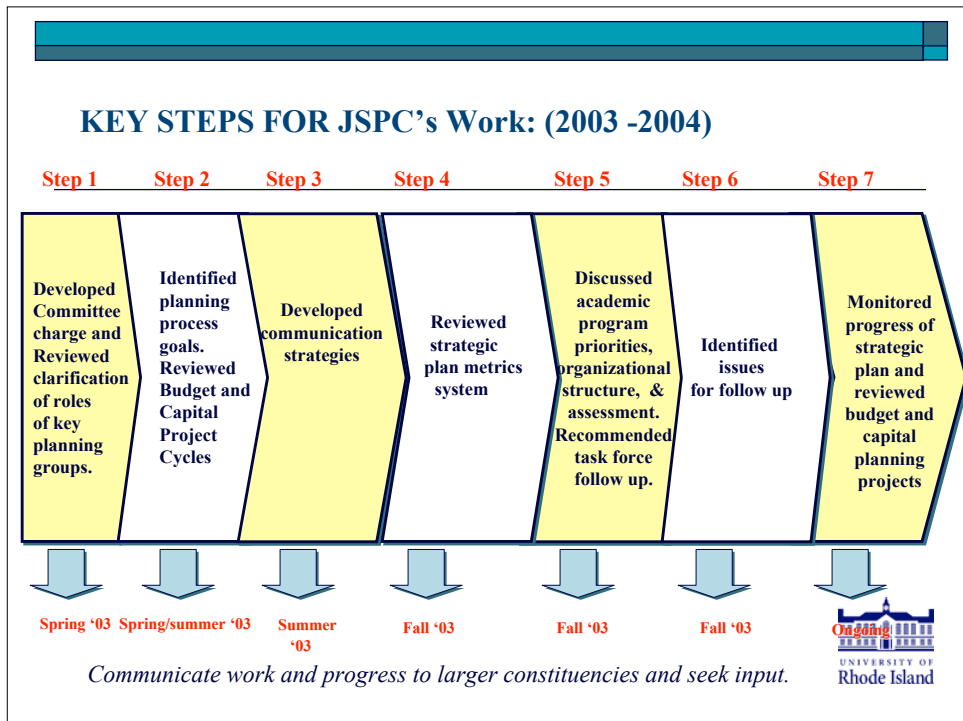
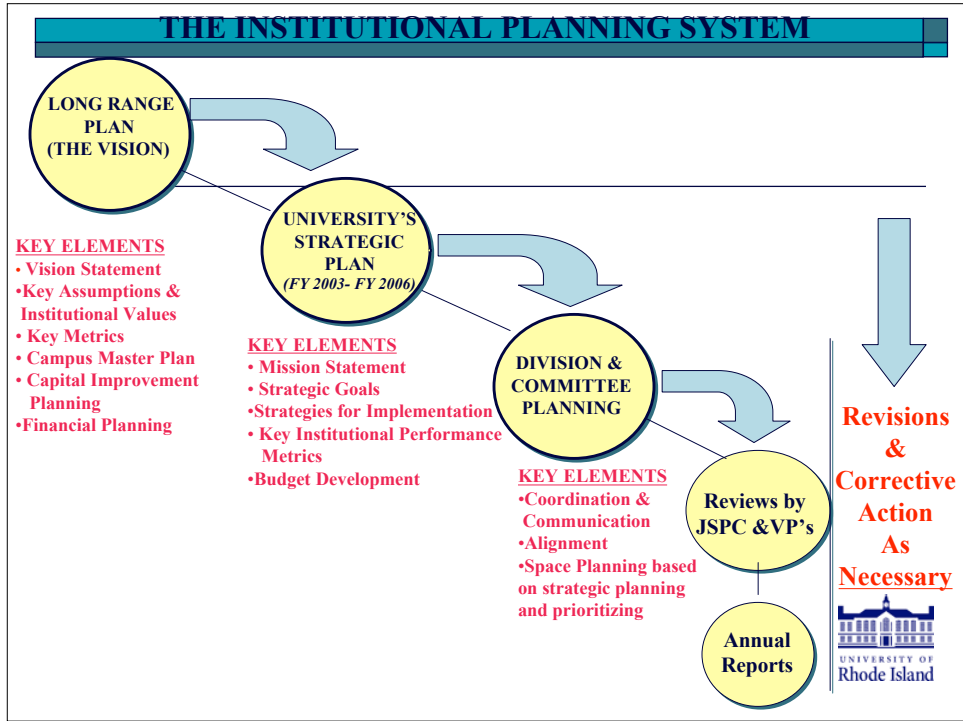
### GOALS

What will be accomplished.

### ACTION PLAN

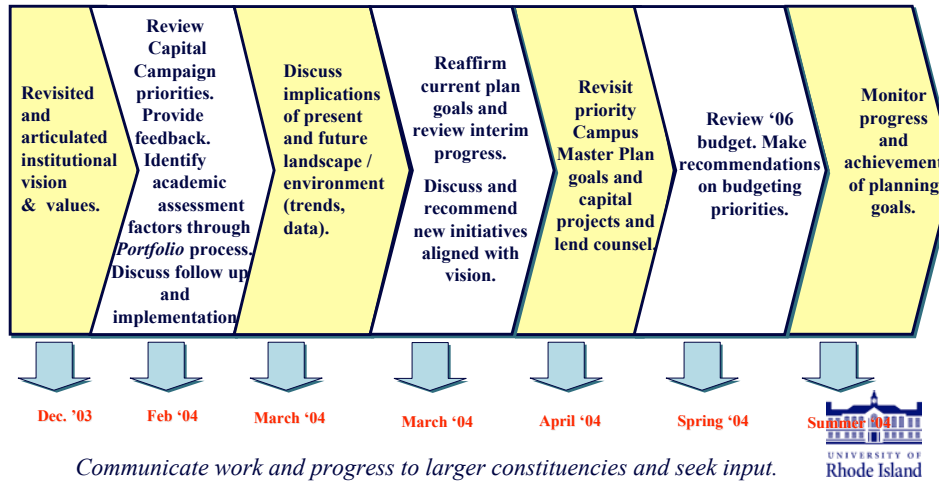
*Steps, Resources, time, metrics*





*Continued* - KEY STEPS FOR JSPC's Work: (2003-2004)

Step 8      Step 9      Step 10      Step 11      Step 12      Step 13      Step 14



**Effective Strategic Planning at URI:**

- **Capitalizes on new and existing knowledge**
- **Creates change agents throughout** the organization who will move the future priorities and plans of the University forward
- **Emphasizes a collaborative process** that as much as possible includes input from all segments of campus and stimulates new ideas
- **Respects existing authority** and decision making structures and functional responsibilities
- **Achieves the integration** of the fiscal, physical, academic, and human resources that will relate to the level of involvement and knowledge incorporated from those functional areas with consideration of any related projects, issues, deadline, schedules.
- **Incorporates data driven decisions** – maximizing knowledge of related research and trends that effect higher education
- **Ensures alignment** of all planning activities and processes
- **Tracks progress** and communicates achievements



---

**Strategic Planning Goal:** *Increased organizational effectiveness*

---

**Strategic Planning Process:**

- *Create a culture of strategic decision making*
- *Decentralized planning focused on the academic planning goals and the institution's strategic plans.*
- *Focus on collaborative planning structures throughout the organization and determine alignment and linkages between them*

**Strategic Planning System:**

- *JSPC - role*
- *Existing governance structures (Faculty Senate, VP's, key planning committees - .. Space planning, campus master planning, etc.)*

**Planning Strategy:** *Shared governance is emphasized, Planning Services to provide support to the campus for planning, focused on shared vision and goals - alignment, communication, interface between groups.*



---

**The Joint Strategic Planning Committee** advises the President and the Faculty Senate on broad policies and principles affecting the general direction of the University of Rhode Island in conjunction with its vision, mission, and values as a learning community. The Committee shall assist in the implementation and progress of the President's strategic plan and monitor the development of a university strategic planning process, which shall integrate aspects of finance, human resources, academic programming, student affairs, fund raising, and capital projects. The planning process at the University and the priorities established through it shall guide decisions on institutional funding in concert with its vision and mission.



## Role of the Senior Planning Committee: (JSPC)

- **Will have the broadest view** of the University and will represent the larger University community in determining University-wide vision, values, and strategic priorities/directions for the institution as a whole.
- **Encourage and support Division and Departmental planning** and results that align with University-wide priorities.
- Develop and endorse **an integrated planning process and schedule**.
- Be aware of and **monitor progress** achieved on new initiatives.
- **Evaluate** previous strategic plans, review and incorporate into present plans.
- **Incorporate continued environmental scans, research, and data** to inform planning and shift priorities when needed.
- **Communicate** planning goals and progress to the University community.
- **Develop priorities that drive resource allocation** decisions.



## Background Information

*Other University Planning Committees and how they interface with each other*



## KEY PLANNING COMMITTEES

**The JSPC - *The Joint Strategic Planning Committee***

**The Campus Master Planning Review Team**

**The Asset Protection Committee**

**SEDA - *The Space, Enhancement, Design, and Allocation Committee***  
*The Space Logistics Team*

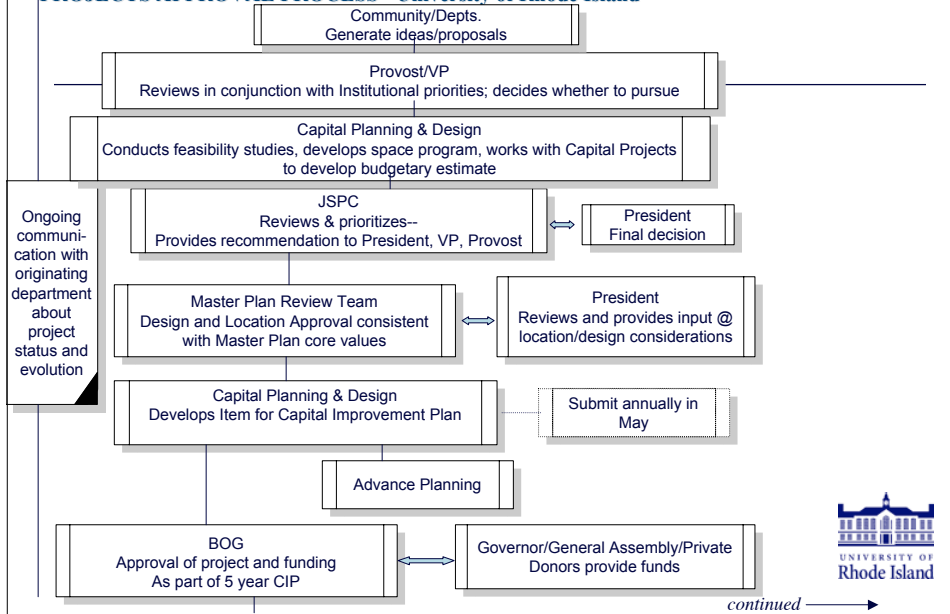
**Building Committees**

**Academic Planning Committees**

**Assessment, Measurement, Evaluation committees**

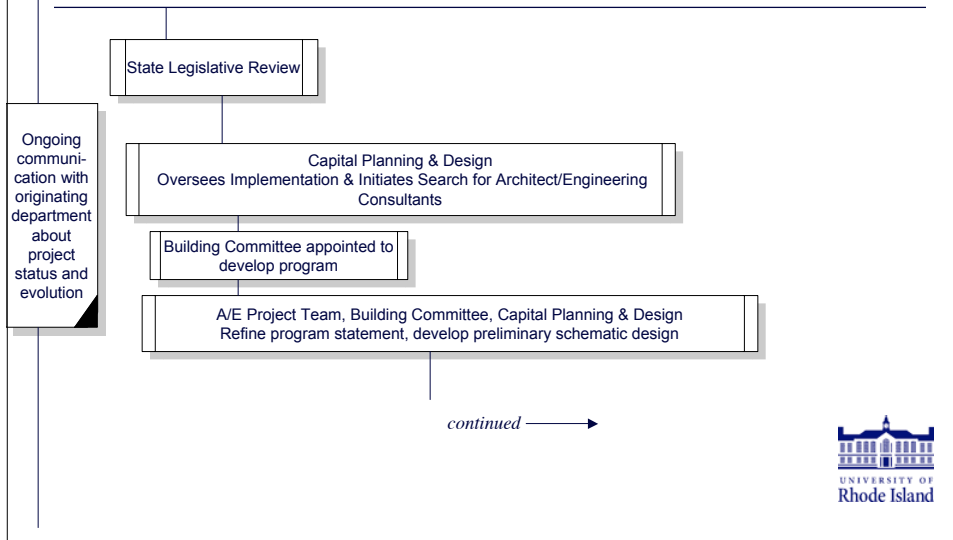


### FLOW CHART FOR NEW BUILDINGS/CAPITAL PROJECTS APPROVAL PROCESS - University of Rhode Island

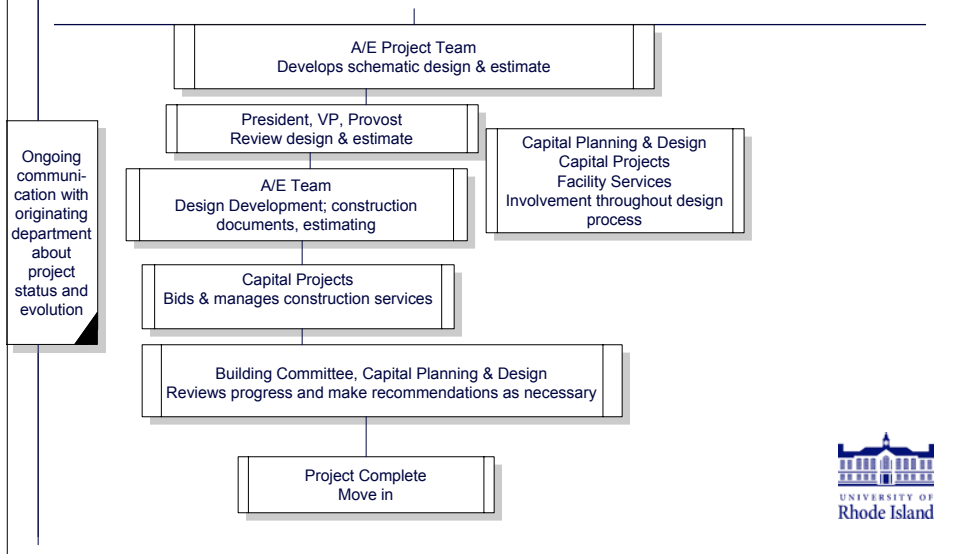


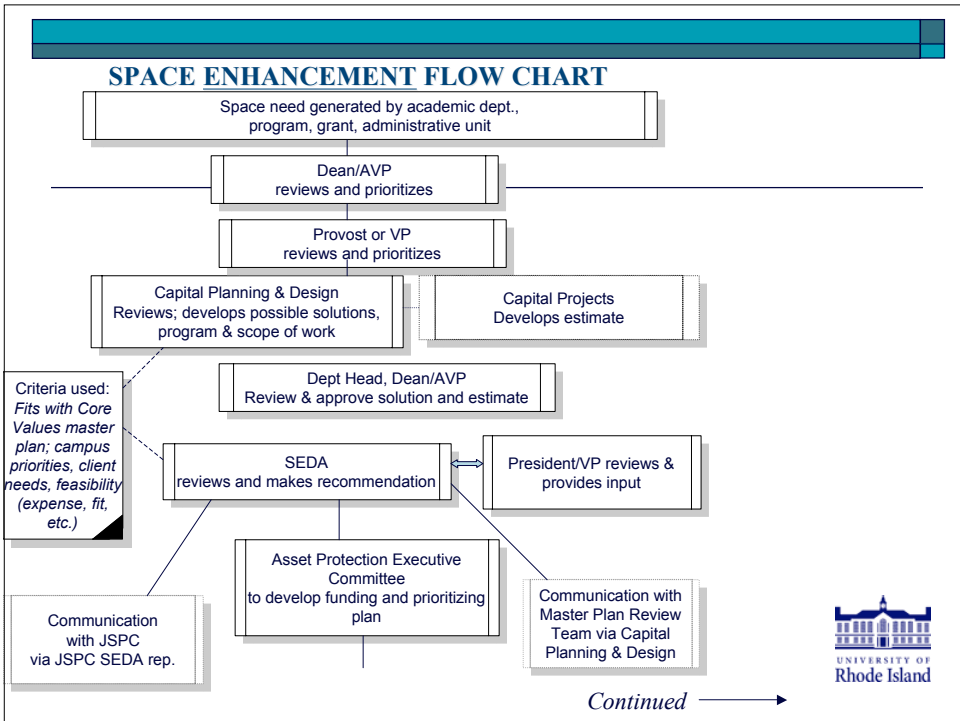
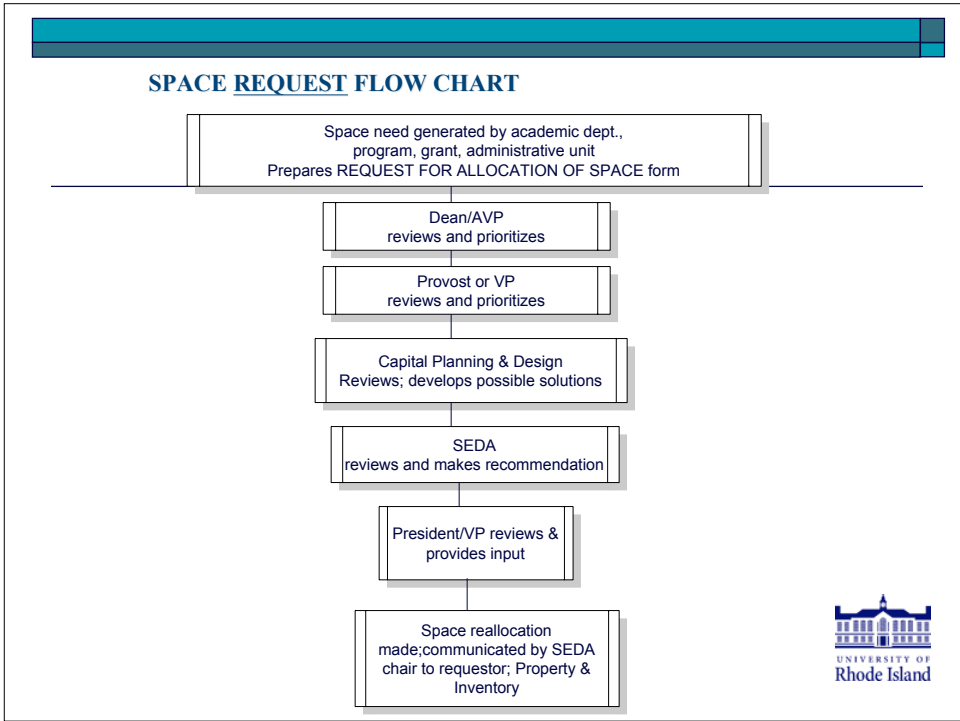
*continued* →

**Continued .....FLOW CHART FOR NEW BUILDINGS/CAPITAL PROJECTS APPROVAL PROCESS - University of Rhode Island**



**Continued... FLOW CHART FOR NEW BUILDINGS/CAPITAL PROJECTS APPROVAL PROCESS - University of Rhode Island**







## SPACE ENHANCEMENT FLOW CHART

Continued....

